



OTTO-PRICKEN - machines,engineering, experience & solutions

TRADITIONAL

Founded in 1995, we are active in the fields of metal industry, textile machine construction, construction and production for special machine construction, laboratory equipment and spare parts production for Vald. Henriksen machines.

Since many years we are active with textile machines.

From the laboratory to the production machine, experienced engineers and technicians are at work and, in addition to innovations, also offer solutions that will satisfy you as a customer

Flexibility in production, fast throughput times and high processing skills make us a reliable partner for the worldwide market. Our modern machines for the production of textile machines and spare parts guarantees the highest quality, exact processes and timely deliveries.

The experience in textile machine construction lays the foundation for a successful cooperation.

QUALITY and ENVIROMENT MANAGEMENT

Achieving the highest quality standards for our products and services is one of our top corporate targets. Our ecological responsibility towards current and future generations are also important for us, especially when it comes to use natural resources.

In order to be able to supply our customers with high-quality machines in the future, our products and processes are subject to precisely defined process and test steps with the aim of a continuous improvement process. The improvement process is supported by various methods such as process optimization, advanced quality controls, quality and environmental management and internal audits, to name just a few.

MANUFACTURE AND GUARANTEE

All machines are manufactured in Germany and are subject to test-run before they are shipped.

In order to guarantee our high process quality, we subject all products, machines and processes to constant quality controls. These are carried out before, during and after the completion of each project and are carried out both visually and via inline quality assurance systems.

The focus is on the satisfaction of our customers. The zero-defect goal is the basis of what we do. That is why we align our processes with the requirements and expectations of our customers.

By investing in the latest technologies and machines, we continuously improve our process stability and production times. This includes inline camera monitoring, 2D-controlled CNC measuring machines and material testing machines.

With the help of a coupling of the results of our measuring and testing machines in our CAQ system, our specialized employees also control an efficient, precise and at the same time capable and stable production of the components.

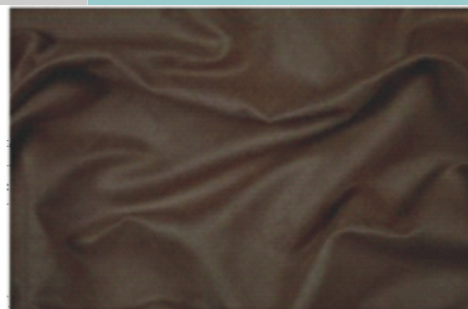
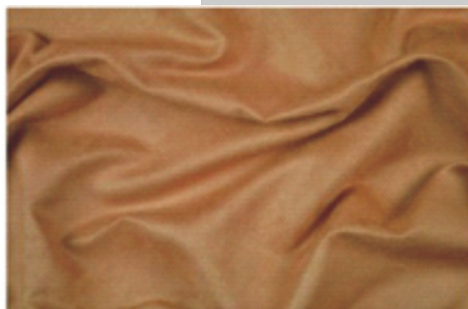
OUT TEAM – OUR PROFIT

Together with our employees we pursue a common goal! To satisfy you!

The employees of Otto-Pricken Textilmaschinen GmbH & Co.KG are well trained for your needs and represent the most important value in our company.

Let a strong team convince you!

Our team consists of experienced engineers, technicians and specialists who are happy to support and advise you at any time.



Type: OP-VIE 12L and 23L

Batch Dyeing Machine: Type OP-VIE 12L & 23L

also called mini dyeing machine, is an electromagnetic heating dyeing machine. Its unique design of simultaneously moving fabric and dye liquor realizes sufficient permeability of dye liquor to fabrics and achieves uniform coloring in the tension-free environment.

Follows are Textile Medium-Batch Dyeing Machine specification:

- Fabric and dye liquor move simultaneously in the pressure-resistant cylindrical dye vat to achieve uniform coloring in the tension-free environment
- Encircling rod to position fabric, ensure unclotting of fabric and dyeing uniformity
- The liquor ratio can be as low as 1:4
- Electromagnetic heating and self-heating of the dye vat realize high heating efficiency
- Independent of steam, suitable to widely environment
- Dyeing controller directly controls the temperature of dye liquor to ensure the temperature accuracy
- Editable and storable process programs up to 100pieces, 100steps for each; latest 10 pieces of process programs can be inquired



Model No	Batch Dyeing OP-VIE-12L	Batch Dyeing OP-VIE-23L
Dye vat capacity	12L	23L
Fabric weight	50g-1kg	50g-3kg
Lowest liquor ratio	1 : 4	
Temperature control range and accuracy	RT~135°C, ±0.5°C when constant temperature	
Heat method	Electromagnetic heating	
Max. heating rate	3°C/min	
Cooling method	Air-cooling	
Max. cooling rate when temp. > 80°C	3°C/min	
Editable dyeing process	100 programs (100 steps for each)	
Power supply	Single phase 230V	Three phases 400V
Environment requested	Temperature: < 50°C Humidity: 60% - 80%RH and well ventilated	





Type: KK- V and KK-H

Lab Padder machines: TYPE KK-V & KK-H

For the laboratory treatment of sample pieces for knitting and weaving fabrics.

Nowadays customer requires not only the precise color but also the good hand-feeling of the finished goods. With Otto-Pricken LAB Padder, you could get the high repeatability sample by simulating the real production environment; with it, you also can develop the value added, add functions of fabrics like fireproofing, dust-resistant, oil-resistant, water-repellent, breathable etc., to develop new business, new benefits and improve competitiveness of the products.

Follows are features of Otto-Pricken LAB PADDER:

- Roller made of imported rubber with NBR coating, acid/alkali-resistant, corrosion-resistant, good elasticity and long service life
- Two air cylinders control each end of roller to keep uniform pressure
- Pressure regulating valves to control the roller pressure
- Cloth speed controlled by inverter within 0-10m/min
- Mirror stainless steel surface, easy to clean and good appearance
- Be equipped with air gun and sprinkler for cleaning padder expediently
- Compressed air supply required



Lab Padder KK-V



Lab Padder KK-H

Model	KK-V (vertical)	KK-H (horizontal)
Roller width	400mm	
Roller diameter	130mm	
Max. air pressure	5,0 bar	
Retained dyestuff ratio:	25-110%	
Speed	0-10 m/Min (adjustable)	
Controller	Automatic run	
Electro power	230 V	





Type: KR 24

HT- LAB BEAKER DYEING MACHINE: Type KR-24

Lab Dyeing machine KR-24 is applicable for various materials, such loose fibers, yarn and pieces of fabric (knitted fabric and woven fabric) which suit for lab dyeing.

Follows are lab dyeing equipment's specification:

- PLC controller to control temperature and LCD display
- LED display of speed of rotating rack
- New-designed electric heater, stable, durable and maximum heating power less than 2.5kW
- Average power consumption less than 100W when compensation for heat preservation
- 316L stainless steel beakers (24 beakers)
- Single-directional strong wind for cooling
- Low liquor ratio up to 1:5
- Be able to edit and store 100 programs and 100 steps per program



Beaker capacity	300ml (24 beakers)
Temperature range	140°C
Temperature accuracy	±0.5°C
Max. heating rate	5.5°C/min
Max. cooling rate	5°C/min from temperature higher than 100°C
Max. dyeable sample	30g/beaker
Programmable dyeing process	100 programs, 100 steps for each program
Speed	0-50rpm, adjustable
Power supply	AC230V/50Hz, 2.5kW
Dimensions	800×800×800mm(L×W×H)
Weigh	Approx. 150kg



TYPE: LOG 150

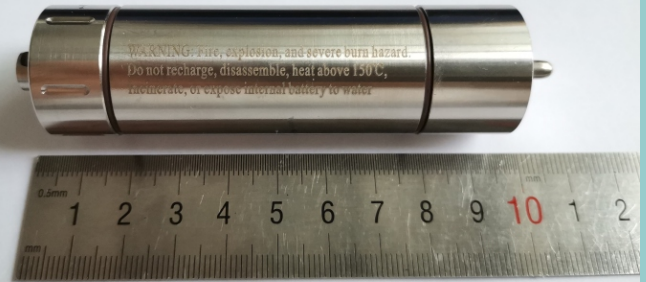
LOG150 High Temperature Data Logger is especially designed for measuring and recording temperature from -50°C to $+150^{\circ}\text{C}$ with an accuracy of $\pm 0.5^{\circ}\text{C}$ on occasions like validating the dye liquor temperature in dyeing machines.

Through precise measuring and recording, you can get the practical temperature data and curve during dyeing process so as to better help enterprises improve quality management.

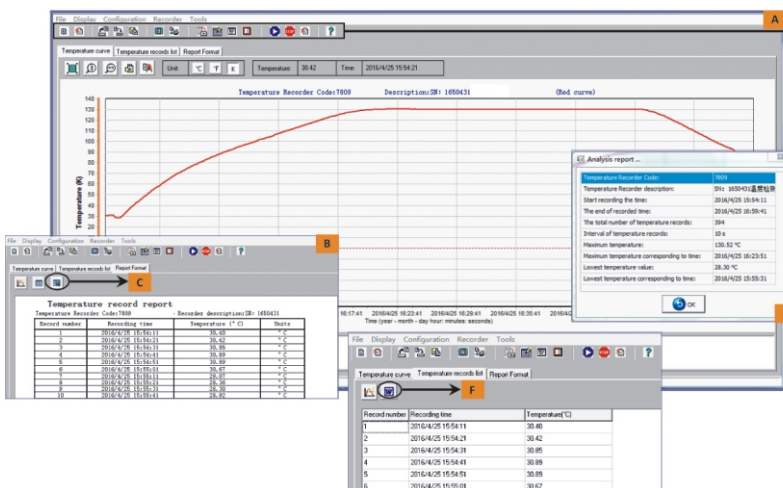
This stainless steel device is submersible. To use, simply place it in the high temperature and high pressure liquid, then use the software to start, stop and download the logger. Graphical, tabular and statistical data is provided for analysis and can also be exported to Excel/Word automatically.

FEATURE:

- Miniature & Self-contained;
- Rugged water-proof housing;
- Rigid external 10mm length probe, capable of quicker response rate than built-in probe;
- Large storage capacity, can store up to 32,130 readings;
- USB connection, strong compatibility;
- Real-time temperature acquisition, monitoring and alarming function;
- Data can be exported to Excel/Word and saved permanently;
- User replaceable battery;



SOFTWARE:



Shortcuts from left to right:

- New file
- Close the current open file
- Open file
- Save file
- File save as
- Print preview
- Print
- Read the temperature record
- Configuration
- Current state of the logger
- Time deviation
- Start the logger
- Stop the logger
- Delete the records in the logger
- Help

A. Graph data view
B. Tubular data view
C. Save to Excel
D. Statistics view
E. Records list view
F. Edit in Word





Available

Further laboratory equipment is also available on request, such:

- Lab Jigger
- Lab Calender
- Crockmeter
- Martindale & Pilling tester
- Random Tumble Tester
- And more.....

Comprehensive and constantly-updated products, covering solutions to wide range demands of different materials, properties and test methods.

After-sale services:

Quick, professional, efficient!
Customer's satisfaction is the power to transcend ourselves. You can get professional technology support and perfect after sale service for our testing instruments wherever you are.

